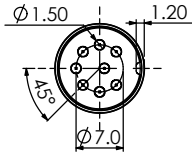
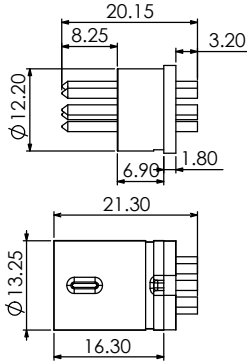


YE-111X DIN CABLE PLUG MOLDING TYPE



MATERIAL :

1. SHIELD COVER :
BRASS NICKEL PTD.
2. HOUSING :
ABS
3. TERMINALS :
BRASS NICKEL PTD.

SPECIFICATION :

Rating : 100V AC 1A max.

Contact Resistance :

Pins 30mΩ max.

Shell 50mΩ max.

Insulation Resistance :

100MΩ at 500V DC min.

Voltage Withstand :

250V AC for 1 minute

YE-1113	YE-1114	YE-1115A	YE-1115B	YE-1115C	YE-1116	YE-1117	YE-1118A	YE-1118B



YE-1113



YE-1114



YE-1115A



YE-1115B



YE-1115C



YE-1116



YE-1117



YE-1118A